

SANTA CLARA COUNTY  OFFICE OF EDUCATION

Dr. Charles Weis
Superintendent of Schools

May 21, 2009

TO: Charles Weis, Ph.D., Superintendent

FROM: Linda Aceves, Assistant Superintendent, Instructional Services Branch
Dale Russell, Ed.D., Director, Standards and Assessment
Dan Mason, Research Analyst, Standards and Assessment

SUBJECT: Release of 2008 Base Academic Performance Index (API)

The California Department of Education (CDE) released the 2008 Base API reports on May 21. These reports provide the 2008 Base API scores and growth targets for the 2008-09 school year. API results are reported twice a year: Base API in the Spring and a corresponding Growth API in late summer, which measures growth of a school in a year. The release of the Base API has been delayed by several months the past two years because CDE has had to make adjustments to account for third through eighth grade students taking the California Modified Assessment (CMA). Staff has prepared the following analysis for your review. Schools that were not ranked were not included in these calculations.

Santa Clara County (SCC) Compared to California (CA)

- The SCC 2008 Base API median increased from 781 to 792, but was significantly higher than the statewide API, which increased from 728 to 741 (*Figure 1*).
- The SCC Base API median has increased by 51 points since 2000 (from 741 to 792) (*Figure 1*).
- SCC elementary, middle and high schools are outperforming their cohorts at statewide level (*Figure 2*).
- Forty-eight percent of SCC schools (177 of 372) have a 2008 Base API at or above 800, compared to thirty-two percent statewide (2,872 of 9,084) (*Figure 3*).
- The SCC districts' Base API median was higher than the statewide districts' Base API median: 808 compared to 753 (*Figure 4*).
- Overall, in SCC, African American, Asian, Hispanic, White, Socioeconomically Disadvantaged and English Learner subgroups had higher median API's when compared to the state; however, CA Filipino and Students with Disabilities median API's were higher than those SCC subgroups (*Figure 5*).

County Board of Education

Leon F. Beauchman • T. N. Ho • Jane Howard • Grace M. Mah • Craig Mann • Joseph DiSalvo • Anna Song
1290 Ridder Park Drive • San Jose, CA 95131-2304 • (408) 453-6500 • www.sccoe.org
A Champion for Children, Schools, and Community • An Equal Opportunity Employer

SCC Schools account for 3 of the top 6 (and 7 of the Top 20) Performing Schools in CA

Rank*	School	District	2008 Base API
1	William Faria Elementary	Cupertino Union	994
3	Murdock-Portal Elementary	Cupertino Union	989
T 5	Millikin Elementary	Santa Clara Unified	987
T 12	Oak Avenue Elementary	Los Altos Elementary	978
T 16	Herbert Hoover Elementary	Palo Alto Unified	973
T 16	Joaquin Miller Middle	Cupertino Union	973
20	L. P. Collins Elementary	Cupertino Union	972

* T indicates tied rank(s).

Statewide Schools Ranked in Decile 10

Statewide there are 821 schools with Decile 10 rankings. While 4% of the state’s schools that were given decile ranks are in SCC, SCC schools make up 11% of the State’s Decile 10 schools.

Summary of Results for SCC Schools

- Eighteen percent of SCC schools (62 of 349) fall in Decile 1-3, compared to twenty-one percent in 2002 (76 of 359) (*Figure 6*).
- Elementary and middle schools have made significant growth in Base API medians from the 2000 Base API to the 2008 Base API. Elementary schools have gained 63 points and middle schools 78 points, while high schools have dropped 1 point (*Figure 7*).
- There continues to be a gap between White, Asian and Filipino performance compared to the other subgroups. The median APIs for Asian (920), White (879) and Filipino (806) students are significantly higher than those for English Learner (720), Socioeconomically Disadvantaged (710), Hispanic (700), African American (695) and Students with Disabilities (531) (*Figure 8*).

<u>Three Top Performing SCC Districts</u>	API
1. Los Altos Elementary	956
2. Saratoga Union Elementary	952
3. Cupertino Union	938

Three Top Performing SCC Schools by Level

Elementary Schools	District	API
1. William Faria Elementary	Cupertino Union	994
2. Murdock-Portal Elementary	Cupertino Union	989
3. Millikin Elementary	Santa Clara Unified	987
Middle Schools	District	API
1. Joaquin Miller Middle	Cupertino Union	973
2. John F. Kennedy Middle	Cupertino Union	968
3. Sam H. Lawson Middle	Cupertino Union	964
High Schools	District	API
1. Saratoga High	Los Gatos-Saratoga Union	928
2. Monta Vista High	Fremont Union High	924
3. Lynbrook High	Fremont Union High	920

Santa Clara County Districts with API Scores Over 800

District	2008 Base API
Los Altos Elementary	956
Saratoga Union Elementary	952
Cupertino Union	938
Lakeside Joint	937
Palo Alto Unified	915
Los Gatos Union Elementary	907
Loma Prieta Joint Union Elementary	887
Los Gatos-Saratoga Joint Union High	879
Union Elementary	865
Cambrian Elementary	860
Fremont Union High	857
Evergreen Elementary	847
Moreland Elementary	824
Mountain View-Los Altos Union	821
Berryessa Union Elementary	810
Milpitas Unified	808
Mountain View Whisman	808

Santa Clara County Schools Ranked in 10th Decile in Statewide and Similar Schools Ranks

School	District	2008 Base API
William Faria Elementary	Cupertino Union	994
Murdock-Portal Elementary	Cupertino Union	989
Millikin Elementary	Santa Clara Unified	987
Oak Avenue Elementary	Los Altos Elementary	978
Herbert Hoover Elementary	Palo Alto Unified	973
Joaquin Miller Middle	Cupertino Union	973
John F. Kennedy Middle	Cupertino Union	968
Sam H. Lawson Middle	Cupertino Union	964
Ardis G. Egan Junior High	Los Altos Elementary	958
Redwood Middle	Saratoga Union Elementary	954
Addison Elementary	Palo Alto Unified	938
Saratoga High	Los Gatos-Saratoga Joint Union	928
Juana Briones Elementary	Palo Alto Unified	926
Monta Vista High	Fremont Union High	924
Lynbrook High	Fremont Union High	920
KIPP Heartwood Academy	Alum Rock Union Elementary	902

SCC 2008 Base API Statewide Decile Rank Percentages

Decile Ranks	Schools	Percent
Deciles 9 & 10	123	35.3
Deciles 7 & 8	69	19.8
Deciles 5 & 6	67	19.2
Deciles 3 & 4	59	16.9
Deciles 1 & 2	31	8.9
Total	349	100

Change in SCC Statewide Decile Ranks from 2007 Base API to 2008 Base API

Change in Decile Rank	Schools	Percent
Increased by one or more deciles	61	17.7
Stayed the same	212	61.6
Decreased by one or more deciles	71	20.6
Total	344	100

SCC 2008 Base API Similar Schools Rank Decile Percentages

Decile Ranks	Schools	Percent
Deciles 9 & 10	51	15.1
Deciles 7 & 8	49	14.5
Deciles 5 & 6	76	22.5
Deciles 3 & 4	75	22.2
Deciles 1 & 2	87	25.7
Total	338	100

Change in SCC Similar Schools Decile Ranks from 2007 Base API to 2008 Base API

Change in Decile Rank	Schools	Percent
Increased by three or more deciles	19	5.7
Increased by one or two deciles	85	25.3
Stayed the same	95	28.3
Decreased by one or two deciles	106	31.5
Decreased by three or more deciles	31	9.2
Total	336	100

SCC Charter and Small Schools with API Scores Over 800

School	District	2008 Base API
Bullis Charter	Santa Clara County Office of Ed.	964
Lexington Elementary	Los Gatos Union Elementary	944
Lakeside Elementary	Lakeside Joint	937
Marshall Lane Elementary	Campbell Union Elementary	918
Discovery Charter	Santa Clara County Office of Ed.	906
KIPP Heartwood Academy	Alum Rock Union Elementary	902
Fammatre Charter	Cambrian Elementary	895
Sartorette Charter	Cambrian Elementary	894
Rocketship Mateo Sheedy Elementary	Santa Clara County Office of Ed.	891
Rolling Hills Middle	Campbell Union Elementary	888
Forest Hill Elementary	Campbell Union Elementary	887
Dr. T. J. Ownes Gilroy Early College Aca.	Gilroy Unified	879
Village	Campbell Union Elementary	876
Charter School of Morgan Hill	Morgan Hill Unified	848
Capri Elementary	Campbell Union Elementary	845
Price Charter Middle	Cambrian Elementary	845
Farnham Charter	Cambrian Elementary	807

Schools That Did Not Receive a 2008 Base API Score

School	District	Flag
Christa McAuliffe Elementary	Cupertino Union	1
Berryessa Union Elementary	Berryessa Union Elementary	4
Community Day	Campbell Union Elementary	4
Camden Community Day	Campbell Union High	4
Apollo High	East Side Union High	4
Escuela Popular/Center for Training and	East Side Union High	4
Voices College-bound Language Academy	Franklin-McKinley Elementary	4
Gardner Bullis Elementary	Los Altos Elementary	4
Milpitas Community Day	Milpitas Unified	4
The Academy	Oak Grove Elementary	4
Greendell	Palo Alto Unified	4
Packard Children's Hospital/Stanford	Palo Alto Unified	4
Community Career Academy (Continuation)	San Jose Unified	4
San Jose Community Middle	San Jose Unified	4
Advent Community Day	Santa Clara County Office of Ed.	4
Foundry Community Day	Santa Clara County Office of Ed.	4
Leadership Public Schools - Campbell	Santa Clara County Office of Ed.	4
Santa Clara County Juvenile Hall	Santa Clara County Office of Ed.	4
Adair Community Day	Sunnyvale	4
San Jose Conservation Corps Charter	East Side Union High	6
Community Day	Fremont Union High	6
Alternative Placement Academy	Santa Clara County Office of Ed.	6
Pathfinder High	Santa Clara County Office of Ed.	6

Flag Value	Flag Definition
1	<p>This school's proportion of students excused at parent request compared to its 2008 Standardized Testing and Reporting (STAR) program enrollment on the first day of testing is equal to or greater than 10 percent.</p> <p>When a school's proportion of parental waivers is equal to or greater than 10 but less than 20 percent, the California Department of Education (CDE) conducts standard statistical tests to check whether the pupils tested at the school were representative of the entire school's population. This school failed the statistical test or its proportion of parental waivers in 2008 is 20 percent or greater, therefore, the school does not have a valid Academic Performance Index (API) for 2008.</p>
4	In 2008, this school had fewer than 11 valid 2008 STAR test scores. No reliable API can be calculated with so few scores.
6	School has California High School Exit Exam (CAHSEE) results but no valid STAR results. No reliable API can be calculated

Figure 1

**Santa Clara County Schools' Median Base API vs. California Base API
2000 to 2008 All Students**

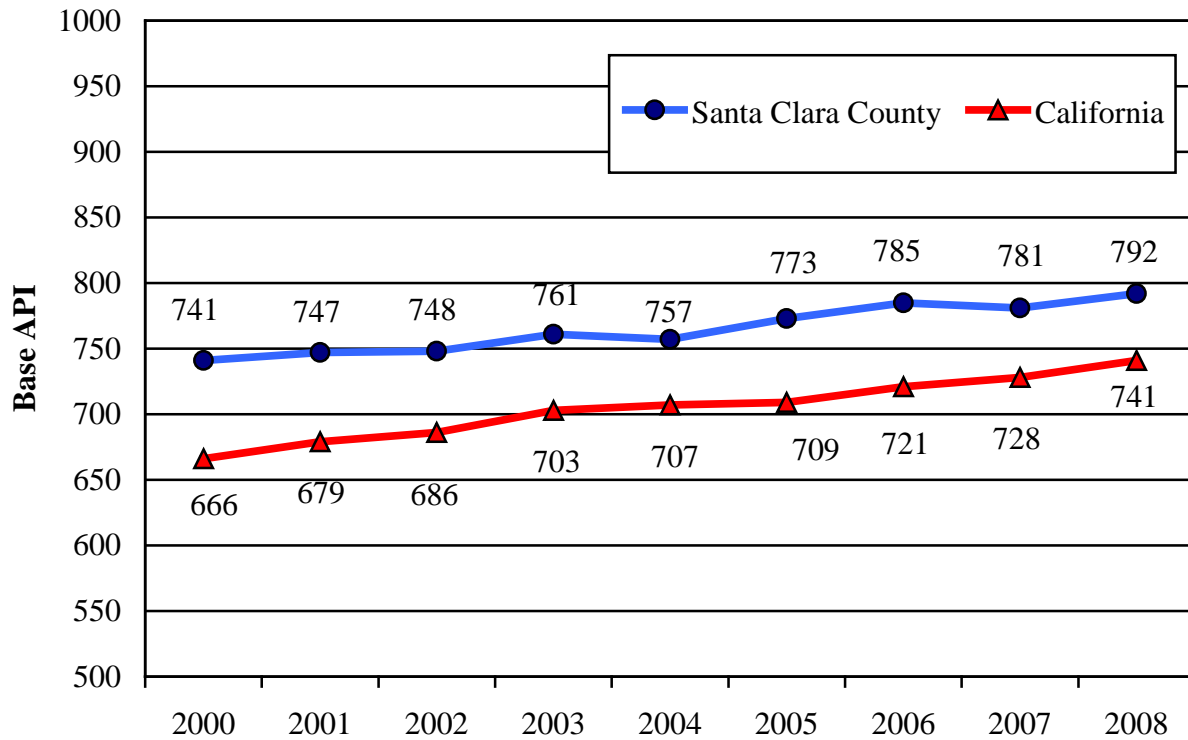
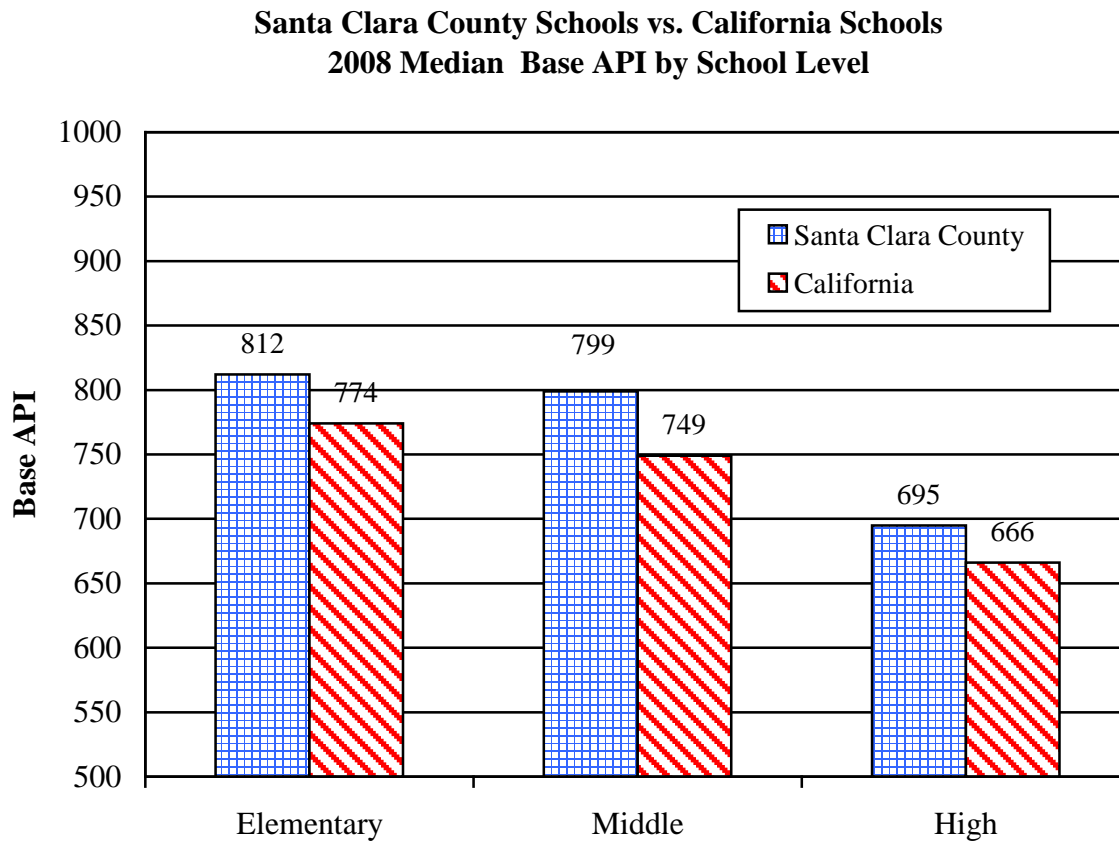


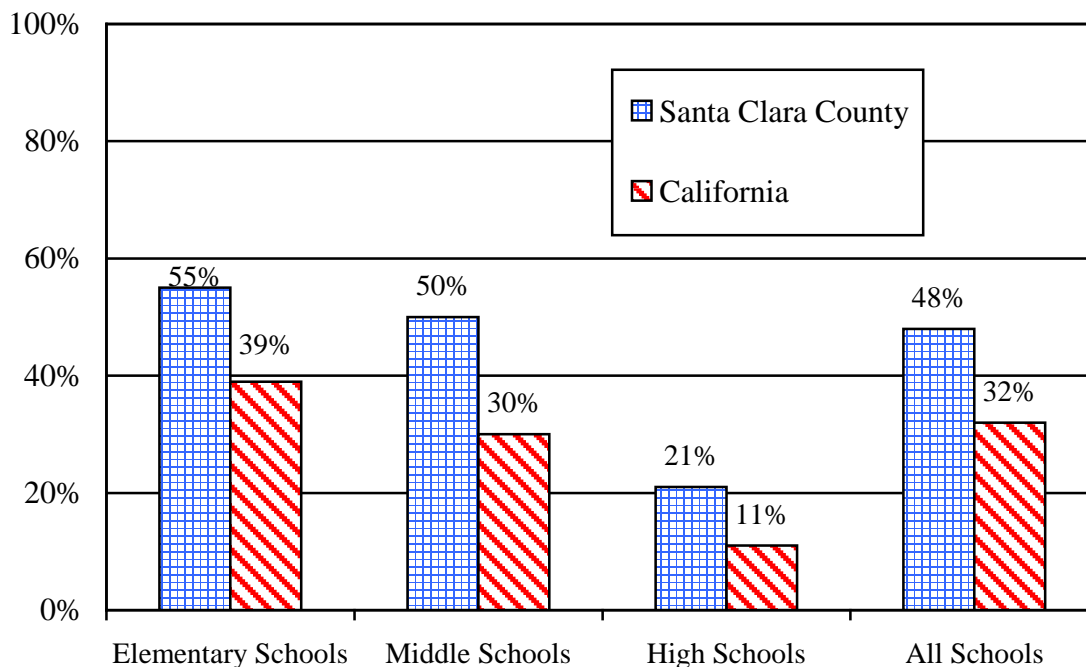
Figure 2



* The California API by School Level calculations are based on Median School APIs.

Figure 3

**Percent of Santa Clara County vs. California Schools At or Above
 2008 Base API Performance Target of 800 by School Level**



Number of Schools At or Above 800				
	Santa Clara County		California	
	800+ API	Total Schools	800+ API	Total Schools
Elementary Schools	132	242	2,256	5,776
Middle Schools	31	62	400	1,354
High Schools	14	68	216	1,954
All Schools	177	372	2,872	9,084

Figure 4

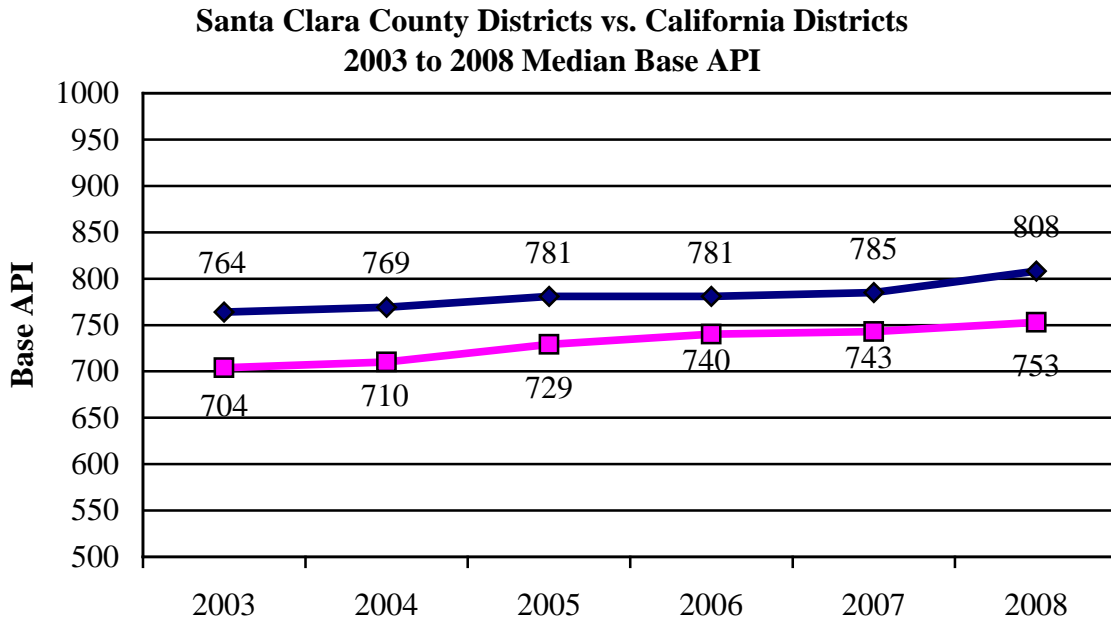
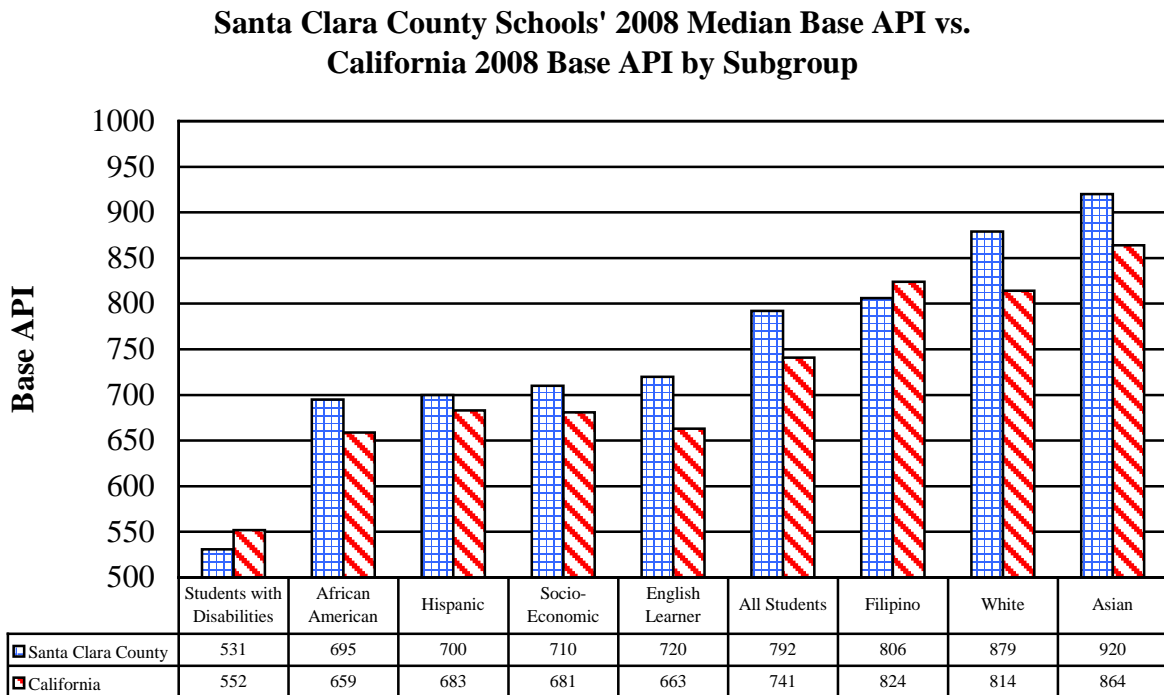


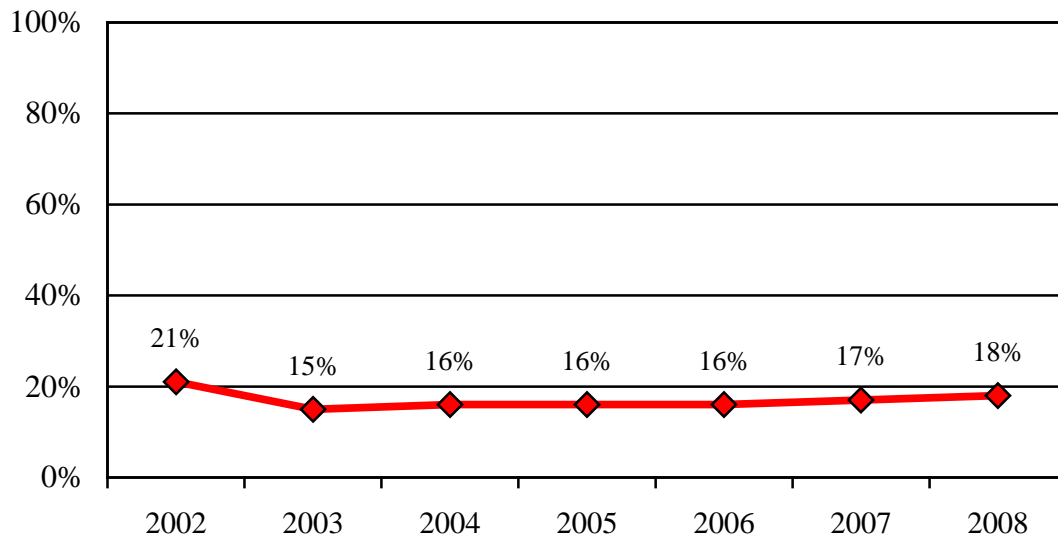
Figure 5



* African American SCC students are numerically significant in only one school.

Figure 6

**Percent of Santa Clara County Schools
 Decile Ranks 1, 2 or 3: 2002 - 2008 Median Base API**



	2002	2003	2004	2005	2006	2007	2008
Schools 1 - 3	76	52	54	56	55	58	62
Total Schools*	359	336	344	345	345	346	349

* Those schools that were not ranked, were not included in this calculation

Figure 7

**Santa Clara County Schools' 2000 - 2008 Median Base API
 by School Level**

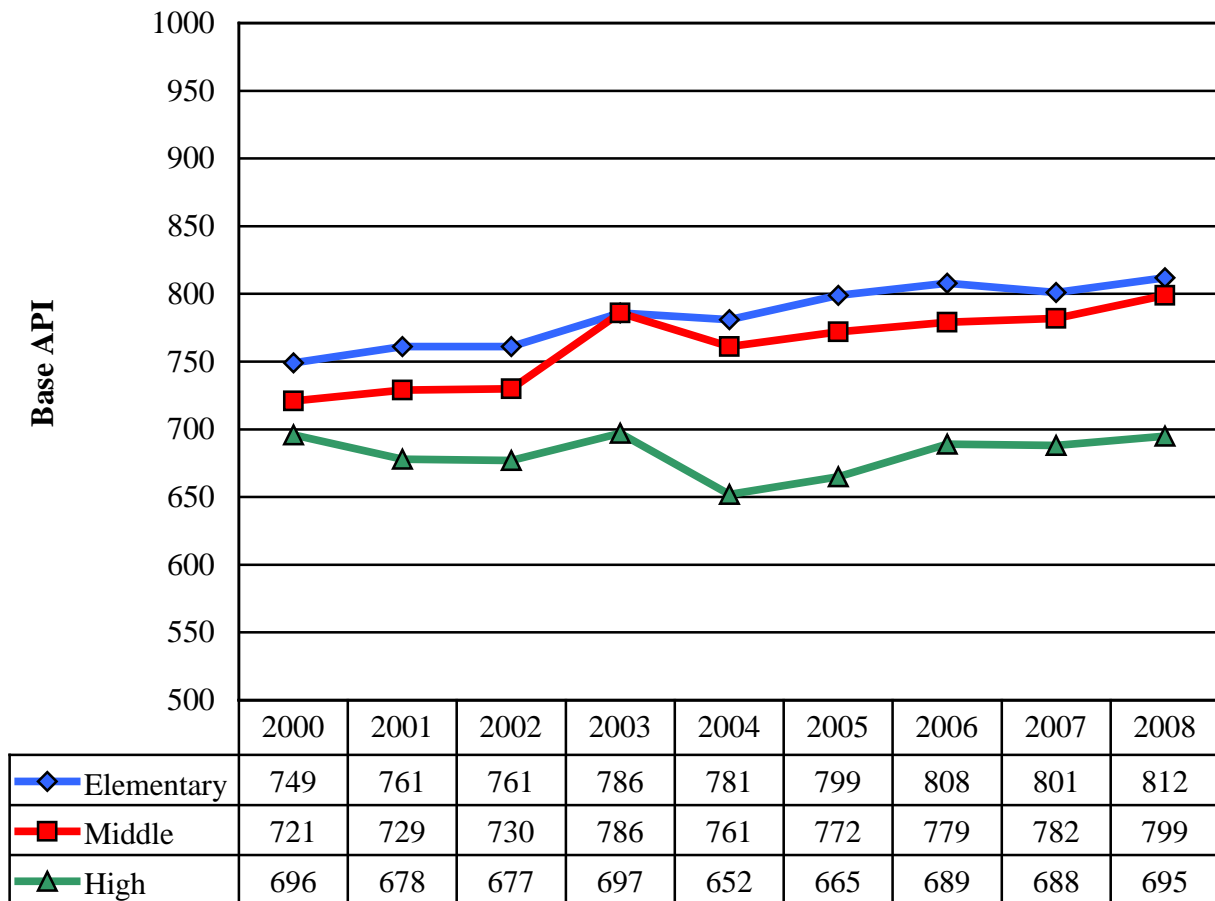
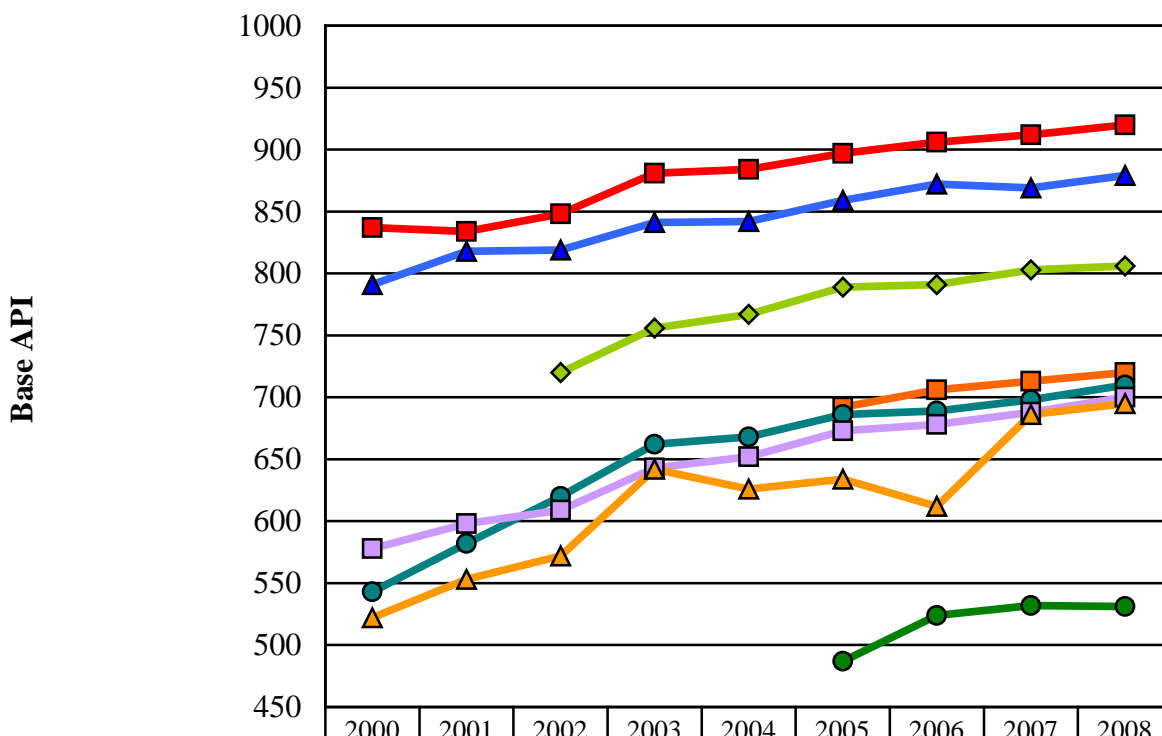


Figure 8

**Santa Clara County Schools' 1999 - 2008 Median Base API
 by Subgroup**



	2000	2001	2002	2003	2004	2005	2006	2007	2008
Asian	837	834	848	881	884	897	906	912	920
White	791	818	819	841	842	859	872	869	879
Filipino			720	756	767	789	791	803	806
English Learner						692	706	713	720
Socioeconomically Disadvantaged	543	582	620	662	668	686	689	698	710
Hispanic	578	598	609	643	652	673	678	688	700
African American	522	553	572	642	626	634	612	686	695
Students with Disabilities						487	524	532	531

* African American Students are numerically significant in only one school.

	Number of Students Included in the 2008 Base API		Numerically Significant Subgroup Populations at Schools	
Hispanic	65,117	36.2%	62,202	40.3%
Asian	48,316	26.9%	43,176	28.0%
White	48,726	27.1%	44,655	28.9%
Filipino	9,571	5.3%	4,311	2.8%
African American	5,879	3.3%	128	0.1%
Pacific Islander	1,368	0.8%	0	0.0%
American Indian	806	0.4%	0	0.0%
Socioeconomically Disadvantaged	67,249	37.4%	64,460	41.7%
English Learner	60,715	33.8%	52,544	34.0%
Student with Disabilities	17,220	9.6%	5,934	3.8%
Total	179,783		154,472	

All Santa Clara County Schools with 2008 API Over 800

School	District	2008 Base API
William Faria Elementary	Cupertino Union	994
Murdock-Portal Elementary	Cupertino Union	989
Millikin Elementary	Santa Clara Unified	987
Oak Avenue Elementary	Los Altos Elementary	978
Herbert Hoover Elementary	Palo Alto Unified	973
Joaquin Miller Middle	Cupertino Union	973
L. P. Collins Elementary	Cupertino Union	972
Loyola Elementary	Los Altos Elementary	970
Nelson S. Dilworth Elementary	Cupertino Union	970
Garden Gate Elementary	Cupertino Union	969
John F. Kennedy Middle	Cupertino Union	968
William Regnart Elementary	Cupertino Union	968
Blue Hills Elementary	Cupertino Union	967
Almond Elementary	Los Altos Elementary	964
Bullis Charter	Santa Clara County Office of E	964
Sam H. Lawson Middle	Cupertino Union	964
Tom Matsumoto Elementary	Evergreen Elementary	964
Abraham Lincoln Elementary	Cupertino Union	963
Duveneck Elementary	Palo Alto Unified	963
Argonaut Elementary	Saratoga Union Elementary	960
Ardis G. Egan Junior High	Los Altos Elementary	958
Santa Rita Elementary	Los Altos Elementary	956
Springer Elementary	Los Altos Elementary	956
Louis E. Stocklmeir Elementary	Cupertino Union	955
Redwood Middle	Saratoga Union Elementary	954
Montclair Elementary	Cupertino Union	953
Saratoga Elementary	Saratoga Union Elementary	951
Covington Elementary	Los Altos Elementary	950
Williams Elementary	San Jose Unified	949
C. B. Eaton Elementary	Cupertino Union	945
Lexington Elementary	Los Gatos Union Elementary	944
Foothill Elementary	Saratoga Union Elementary	943
Silver Oak Elementary	Evergreen Elementary	942
R. I. Meyerholz Elementary	Cupertino Union	940
Stevens Creek Elementary	Cupertino Union	940

School	District	2008 Base API
James Franklin Smith Elementary	Evergreen Elementary	939
Lucille M. Nixon Elementary	Palo Alto Unified	939
Addison Elementary	Palo Alto Unified	938
Blossom Hill Elementary	Los Gatos Union Elementary	938
Graystone Elementary	San Jose Unified	938
Lakeside Elementary	Lakeside Joint	937
Terman Middle	Palo Alto Unified	932
Georgina P. Blach Junior High	Los Altos Elementary	931
West Valley Elementary	Cupertino Union	930
David Starr Jordan Middle	Palo Alto Unified	928
Jane Lathrop Stanford Middle	Palo Alto Unified	928
Saratoga High	Los Gatos-Saratoga Joint Union	928
Simonds Elementary	San Jose Unified	928
Juana Briones Elementary	Palo Alto Unified	926
Monta Vista High	Fremont Union High	924
Frank L. Huff Elementary	Mountain View Whisman	923
El Carmelo Elementary	Palo Alto Unified	922
Walter Hays Elementary	Palo Alto Unified	921
Lynbrook High	Fremont Union High	920
Guadalupe Elementary	Union Elementary	918
Marshall Lane Elementary	Campbell Union Elementary	918
Fairmeadow Elementary	Palo Alto Unified	916
Cherry Chase Elementary	Sunnyvale	915
Carolyn A. Clark Elementary	Evergreen Elementary	913
Cupertino Middle	Cupertino Union	913
Bret Harte Middle	San Jose Unified	912
Palo Verde Elementary	Palo Alto Unified	912
John Muir Elementary	Cupertino Union	908
Escondido Elementary	Palo Alto Unified	907
Discovery Charter	Santa Clara County Office of E	906
Evergreen Elementary	Evergreen Elementary	906
Cumberland Elementary	Sunnyvale	905
Raymond J. Fisher Middle	Los Gatos Union Elementary	905
Henry M. Gunn High	Palo Alto Unified	904
Country Lane Elementary	Moreland Elementary	903
KIPP Heartwood Academy	Alum Rock Union Elementary	902
Palo Alto High	Palo Alto Unified	900

School	District	2008 Base API
Bagby Elementary	Cambrian Elementary	897
Fammatre Charter	Cambrian Elementary	895
Gussie M. Baker Elementary	Moreland Elementary	895
Noddin Elementary	Union Elementary	895
Ruskin Elementary	Berryessa Union Elementary	895
Sartorette Charter	Cambrian Elementary	894
C. T. English Middle	Loma Prieta Joint Union Elemen	893
Dwight D. Eisenhower Elementary	Cupertino Union	893
Los Alamitos Elementary	San Jose Unified	892
Louise Van Meter Elementary	Los Gatos Union Elementary	892
Rocketship Mateo Sheedy Elementary	Santa Clara County Office of E	891
Daves Avenue Elementary	Los Gatos Union Elementary	889
Alta Vista Elementary	Union Elementary	888
Rolling Hills Middle	Campbell Union Elementary	888
Forest Hill Elementary	Campbell Union Elementary	887
Laurelwood Elementary	Santa Clara Unified	885
Marshall Pomeroy Elementary	Milpitas Unified	883
Loma Prieta Elementary	Loma Prieta Joint Union Elemen	881
Booksin Elementary	San Jose Unified	879
Dr. T. J. Ownes Gilroy Early College Aca	Gilroy Unified	879
John Sinnott Elementary	Milpitas Unified	877
Village	Campbell Union Elementary	876
Carlton Elementary	Union Elementary	874
Ohlone Elementary	Palo Alto Unified	874
Oster Elementary	Union Elementary	874
Chaboya Middle	Evergreen Elementary	870
Nordstrom Elementary	Morgan Hill Unified	869
Curtner Elementary	Milpitas Unified	864
Taylor (Bertha) Elementary	Oak Grove Elementary	864
D. J. Sedgwick Elementary	Cupertino Union	863
Washington Elementary	Santa Clara Unified	863
Benjamin Bubb Elementary	Mountain View Whisman	861
Union Middle	Union Elementary	860
George C. Payne Elementary	Moreland Elementary	858
Warren E. Hyde Middle	Cupertino Union	856
Mountain View High	Mountain View-Los Altos Union	854
Barron Park Elementary	Palo Alto Unified	852

School	District	2008 Base API
Chester W. Nimitz Elementary	Cupertino Union	852
Luigi Aprea Elementary	Gilroy Unified	852
Sutter Elementary	Santa Clara Unified	851
Dartmouth Middle	Union Elementary	850
Norwood Creek Elementary	Evergreen Elementary	850
Leland High	San Jose Unified	849
Millbrook Elementary	Evergreen Elementary	849
Charter School of Morgan Hill	Morgan Hill Unified	848
Sakamoto Elementary	Oak Grove Elementary	848
Thomas Russell Junior High	Milpitas Unified	848
Ponderosa Elementary	Santa Clara Unified	847
Homestead High	Fremont Union High	846
Los Gatos High	Los Gatos-Saratoga Joint Union	846
Pearl Zanker Elementary	Milpitas Unified	846
Capri Elementary	Campbell Union Elementary	845
Noble Elementary	Berryessa Union Elementary	845
Price Charter Middle	Cambrian Elementary	845
Easterbrook Discovery	Moreland Elementary	844
Hacienda Science/Environmental Magnet	San Jose Unified	844
Northwood Elementary	Berryessa Union Elementary	844
Laurelwood Elementary	Evergreen Elementary	843
Reed Elementary	San Jose Unified	843
Los Paseos Elementary	Morgan Hill Unified	842
Cupertino High	Fremont Union High	840
Bracher Elementary	Santa Clara Unified	835
Sierramont Middle	Berryessa Union Elementary	834
Valle Vista Elementary	Mt. Pleasant Elementary	834
Hammer Montessori at Galarza Elementary	San Jose Unified	833
Ledesma (Rita) Elementary	Oak Grove Elementary	833
Marian A. Peterson Middle	Santa Clara Unified	832
Isaac Newton Graham Middle	Mountain View Whisman	830
Manuel De Vargas Elementary	Cupertino Union	829
Evergreen Valley High	East Side Union High	828
Glider Elementary	Oak Grove Elementary	828
Las Animas Elementary	Gilroy Unified	828
Ellis Elementary	Sunnyvale	827
George Mayne Elementary	Santa Clara Unified	827

School	District	2008 Base API
Schallenberger Elementary	San Jose Unified	824
Majestic Way Elementary	Berryessa Union Elementary	823
Rancho Milpitas Junior High	Milpitas Unified	823
Learning in an Urban Community with High	Alum Rock Union Elementary	820
Paradise Valley/Machado Elementary	Morgan Hill Unified	820
Parkview Elementary	Oak Grove Elementary	818
Quimby Oak Middle	Evergreen Elementary	818
Braly Elementary	Santa Clara Unified	816
Cedar Grove Elementary	Evergreen Elementary	816
Sunnyvale Middle	Sunnyvale	815
O. B. Whaley Elementary	Evergreen Elementary	813
Rachel Carson Elementary	San Jose Unified	813
Anthony Spangler Elementary	Milpitas Unified	812
Cherrywood Elementary	Berryessa Union Elementary	812
Renaissance Academy	Alum Rock Union Elementary	811
River Glen	San Jose Unified	811
Cadwallader Elementary	Evergreen Elementary	810
Castillero Middle	San Jose Unified	810
Solorsano Middle	Gilroy Unified	810
Vinci Park Elementary	Berryessa Union Elementary	810
Pioneer High	San Jose Unified	809
Terrell Elementary	San Jose Unified	809
Bernal Intermediate	Oak Grove Elementary	807
Farnham Charter	Cambrian Elementary	807
Frost (Earl) Elementary	Oak Grove Elementary	806
Oak Ridge Elementary	Oak Grove Elementary	806
Leigh High	Campbell Union High	805
Santa Teresa Elementary	Oak Grove Elementary	803
Barrett Elementary	Morgan Hill Unified	802
Brooktree Elementary	Berryessa Union Elementary	802
William Burnett Elementary	Milpitas Unified	800